



- 1 Upper part of roller frame
- 2 Lower part of roller frame
- 3 Controller
- 4 Motor bracket
- 5 Water level sensor
- 6 Motor
- 7 Fleece filter mount
- 8 Fleece filter mount
- 9 Water level sensor mount
- 10 Power supplier



install the water level sensor on the water level (5) sensor mount (9) as picture shown



once the sensor is on the mounting bracket, you can install it on to the upper part(1) of the roller frame with supplied nylon screw





Glide the fleece roller mount(7) into the center of the fleece roll(8)

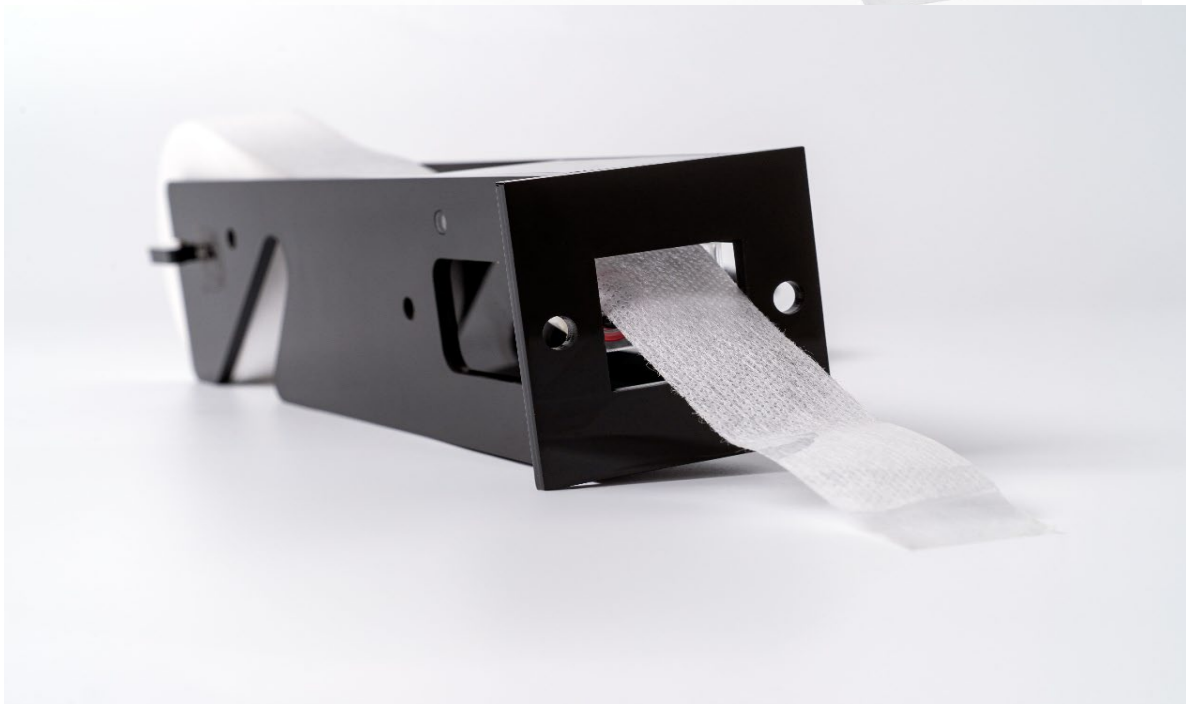


Leave some length on the loose end



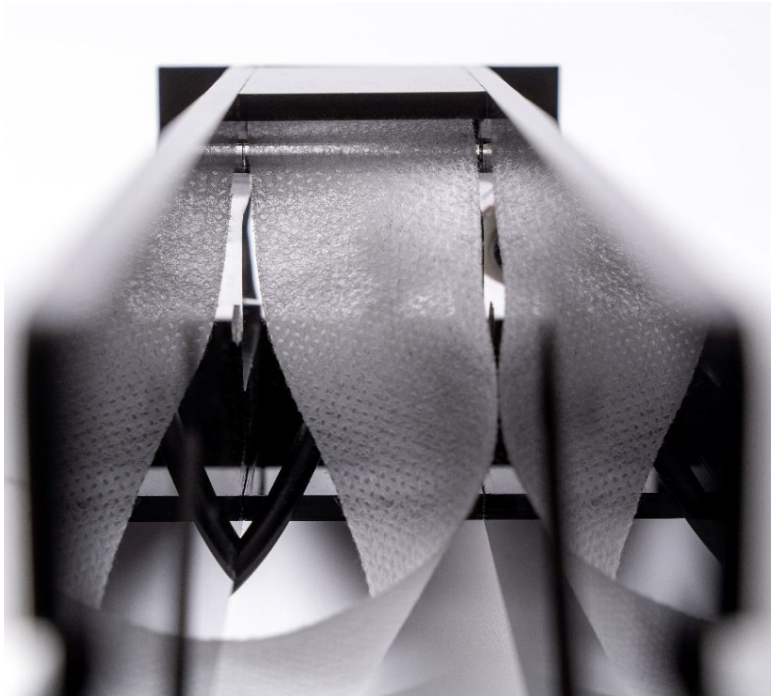
Place the fleece roll with mount on top of the upper frame





Guide the fleece through the upper roller frame where the loose end exits the bottom





The Loose end of the fleece should be guided through the roller frame (2) as shown



Open the gate on the bottom roller frame

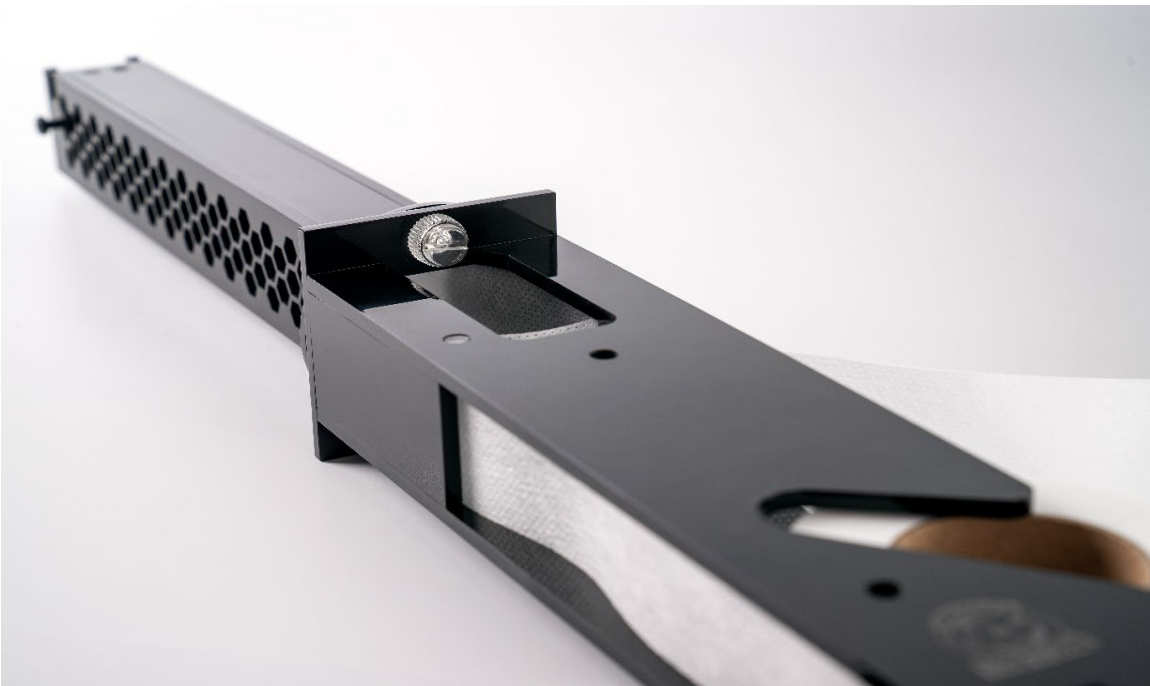


Use the provided clear plastic to guide the fleece back up and through the roller frame, to the top frame.





Close the gate on
the bottom frame



Bolt the upper and lower frames of the unit together with
provided screws





Guided the loose end of the fleece through the roller frame and secure the fleece onto the twist-lock tube.



Insert the motor pin(6) into the twist-lock fleece tube





Secure the motor on the roller frame with provided mounting bracket(4)



We're all
done,
happy
Reefing

